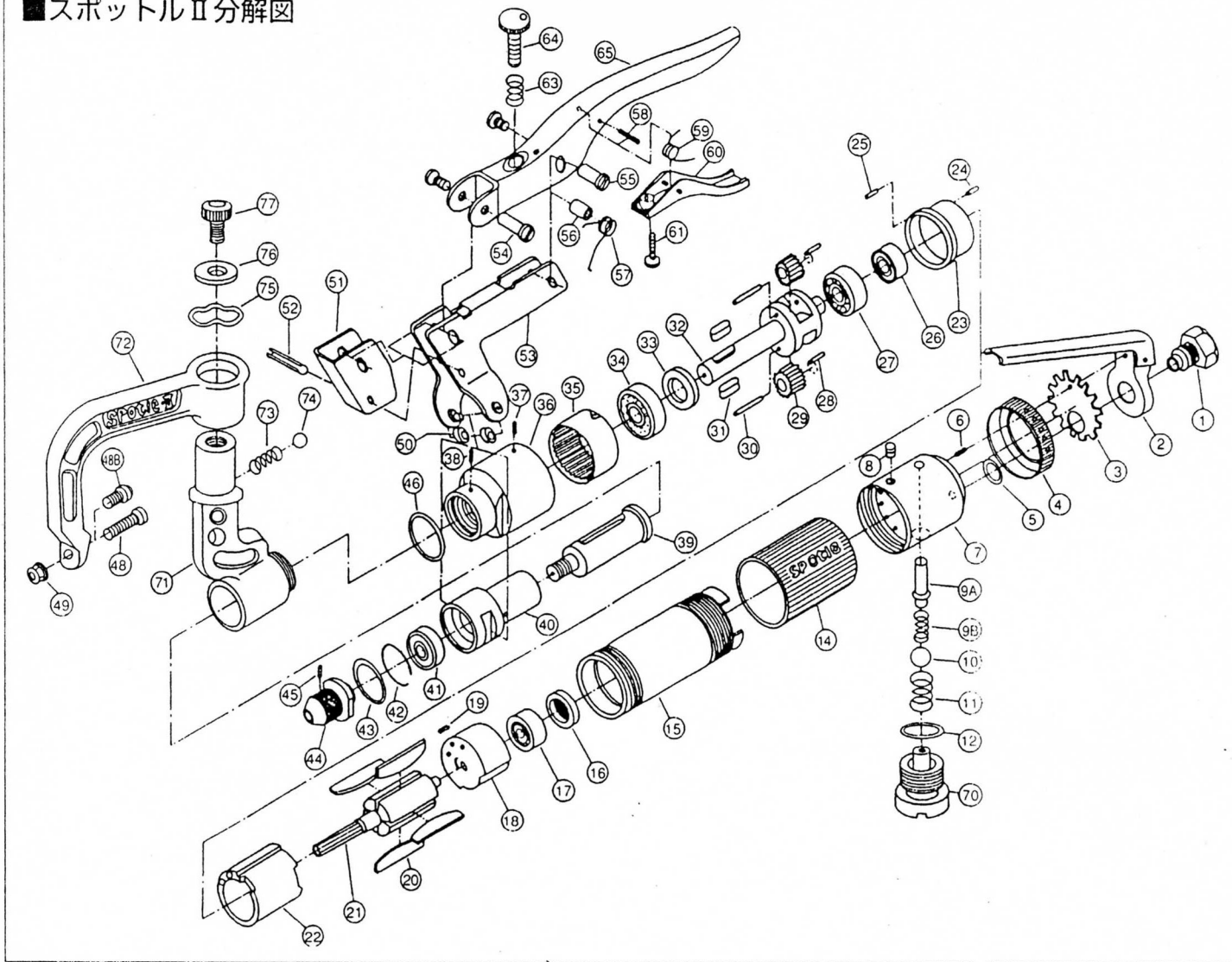


■ スポットルⅡ分解図



Parts For SPOTLE TH-902

1 Inlet Bush	21 Rotor	41 Bearing 6900ZZ	61 Touch Lever Nub
2 Cock Lever	22 Cylinder	42 Stop Ring	63 Slide Nub Spring
3 Cover Spring	23 Front Plate	43 O Ring	64 Alide Nub
4 Exhaust Cover	24 Lock Pin 2.5X5	44 Drill Chuck 6.5MM	65 Grip
5 O Ring P10A	25 Lock Pin 2X6	44B Drill Chuck 8.0MM	66 Drill Bit 8MM
6 Lock Pin 2X8	26 Bearing 608ZZ	44C Drill Chuck 10 MM	66B Drill Bit 6.5MM
7 Valve Body	27 Bearing 6001	45 Lock Bolt 5X5	66C Drill Bit 10 MM
8 Lock Bolt	28 Needle Roller	46 Adjusting Shim Set	70 Regulator Assy.
9A Valve Rod	29 Aidrer Gear	48 Thin Adjusting Bolt6X20	71 Arm A
9B Rod Spring	30 Aidrer Gear Shaft	48B Thin Adjusting Bolt 6X6	72 Arm B
10 Valve Ball	31 Key	49 Lock Nut M6	73 Spring
11 Valve Spring	32 Main Shaft	50 Slide Corer	74 Lock Ball
12 O Ring P12	33 Stop Washer	51 Grip Cover	75 Wave Washer
14 Rubber Grip	34 Bearing 6001ZZ	52 Roll Pin 3X12	76 Washer
15 Rotor Case	35 Internal Gear	53 Slide Lever	77 Lock Bolt 6X12
16 Air Stopper	36 Rotor Cap	54 Grip Center Pin Assy.	
17 Bearing 626	37 Lock Bolt 4X4	55 Coushon-Pin Assy.	
18 Valve Plate	38 Lock Bolt 4X4	56 Courer	
19 Lock Pin 2.5X5	39 Slide Shaft	57 Coushon Spring	
20 Rotor Blade	40 Slide Bush	58 Roll Pin 3X18	
		59 Touch Lever Spring	
		60 Touch Lever	